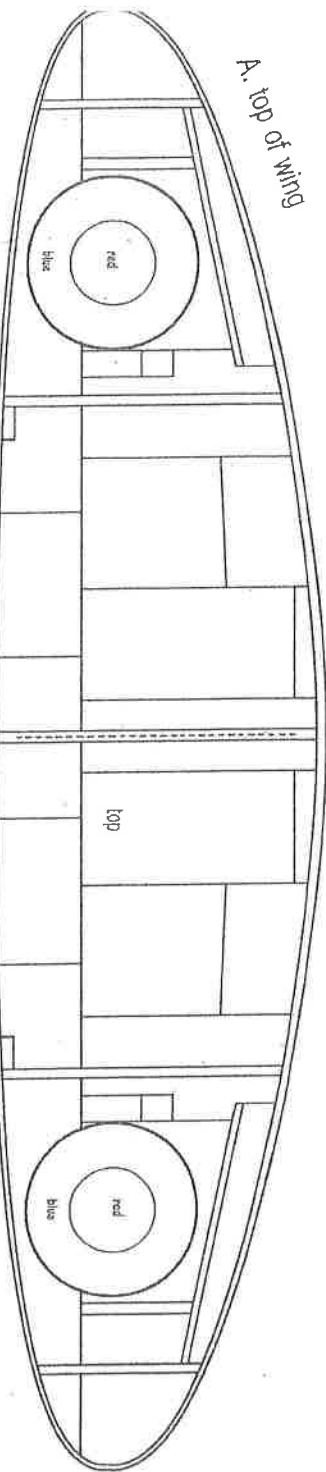
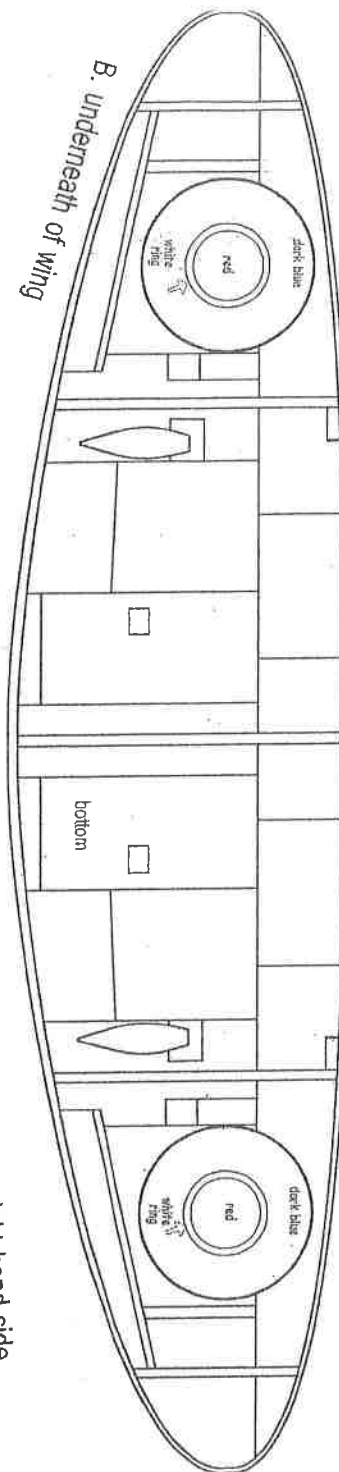


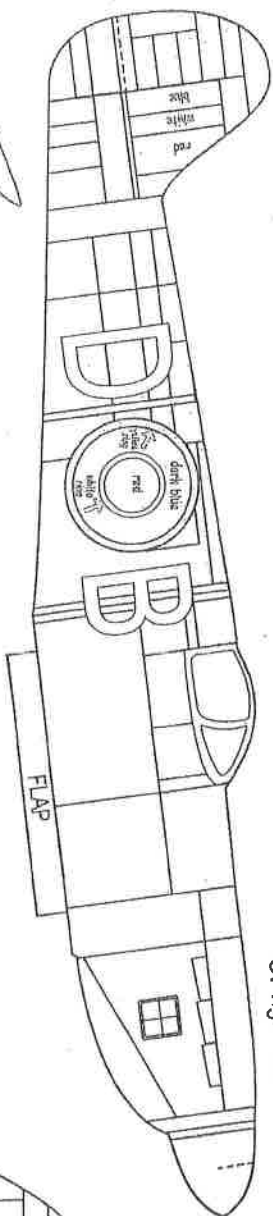
A. top of wing



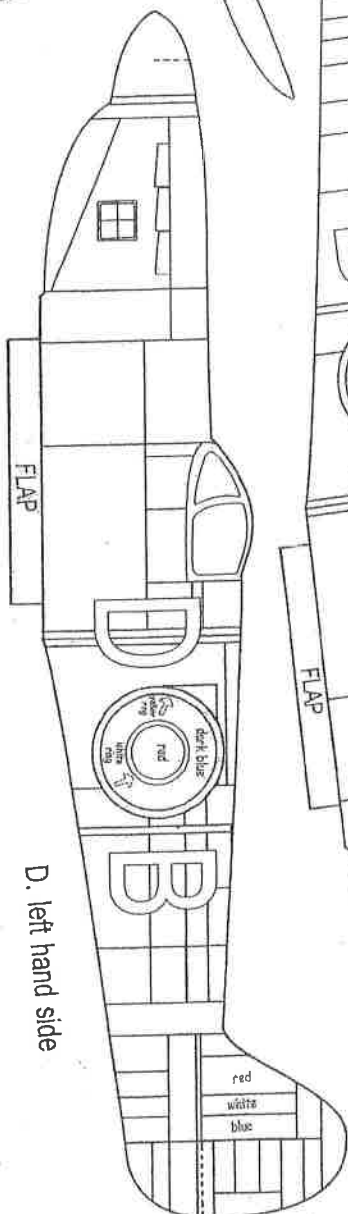
B. underneath of wing



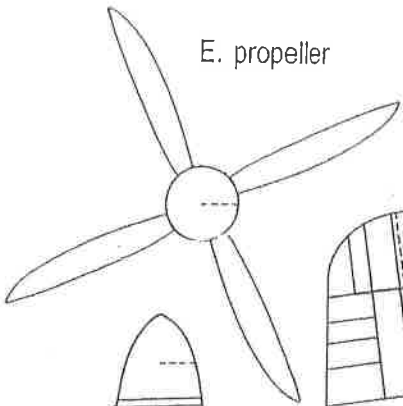
C. right hand side



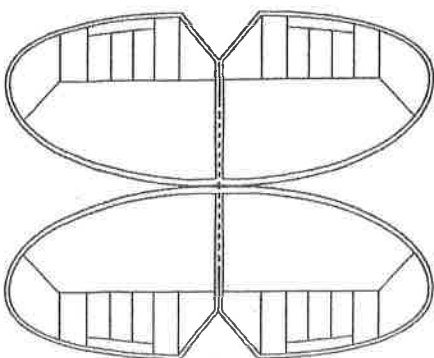
D. left hand side



E. propeller



F. rudder



WWW.BLTZSCHOOL.CO.UK  
Make your own school spitfire

#### INSTRUCTIONS:

1. Either print or stick this whole sheet onto a piece of card
2. Colour in the plane in your own camouflage colours
3. Cut out all the parts carefully
4. Bend and glue the wing halves A. and B. over to make one full wing
5. Cut through the dotted line in the middle of the wing to make a slit
6. Stick the two sides C. and D. together, leaving the parts labelled 'FLAP' unglued
7. Put these flaps through the slit in the wing
8. Fold the flaps out and glue them on the underneath of the wing
9. Cut a slit down the end of the dotted line in the planes tail
10. Glue the two halves of the F. rudder together
11. Cut a slit in the rudder and slot it into the slit at the end of the plane
12. Cut out propeller E. including the slit in the middle and insert it into the front of the plane
13. Give each propeller a slight twist for full spitfire effect